

70°54'W

70°52'W

70°50'W

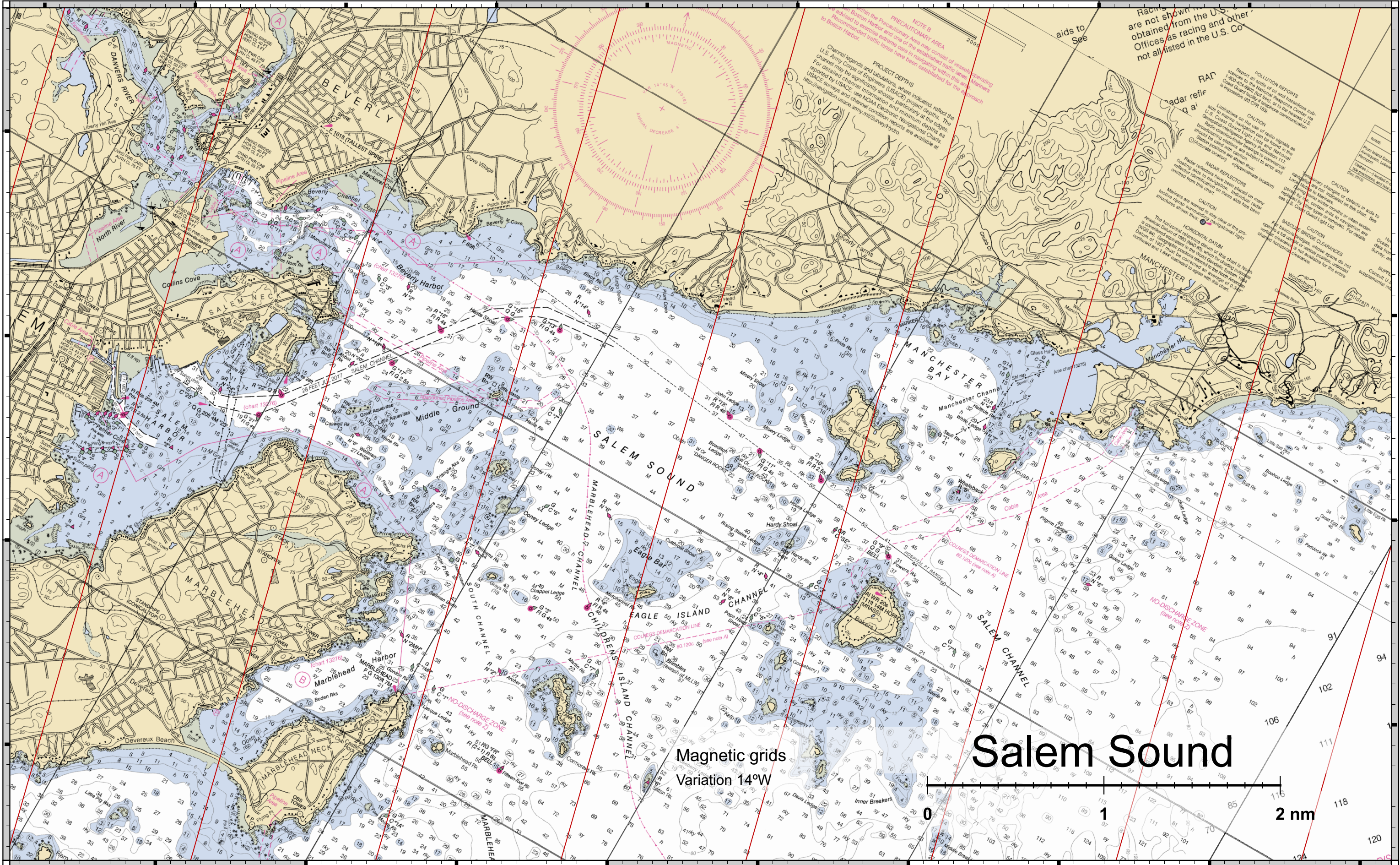
70°48'W

42°32'N

42°36'N

42°30'N

42°34'N



**NOTE A**  
 Channel legends and tabulations, where indicated, reflect the U.S. Army Corps of Engineers (USACE) project depths. For detailed channel information and minimum depths as reported by USACE, use NOAA Electronic Navigational Charts (ENCs) and channel condition reports as available at <http://navigation.usace.army.mil/SurveyHydro>.

**NOTE B**  
 A PRECAUTIONARY AREA may consist of vessels operating in Boston Harbor and one of the established traffic lanes. Mariners are advised to exercise extreme care in navigating within this area. Recommended traffic lanes have been established for the approach to Boston Harbor.

**PROJECT DEPTHS**  
 Channel legends and tabulations, where indicated, reflect the U.S. Army Corps of Engineers (USACE) project depths. For detailed channel information and minimum depths as reported by USACE, use NOAA Electronic Navigational Charts (ENCs) and channel condition reports as available at <http://navigation.usace.army.mil/SurveyHydro>.

Radar reflectors are not shown from the U.S. Coast Guard unless they are not all listed in the U.S. Coast Guard's database.

**CAUTION**  
 Report all spills of oil and hazardous substances to the National Response Center (1-800-424-6802) or to the nearest U.S. Coast Guard office. For spill response communication, see 33 CFR 153.

**CAUTION**  
 Limitations on the use of radio signals as aids to navigation can be found in the Radio Aids to Navigation section of the U.S. Coast Guard's database. Station positions are shown subject to error and should be used with caution.

**CAUTION**  
 Radar reflectors have been placed on many structures in the area. Individual radar reflector identification on these aids has been omitted from this chart.

**CAUTION**  
 Mariners are warned to stay clear of the structure shown in this chart.

**CAUTION**  
 The horizontal force datum of the chart is North American Datum of 1983 (NAD 83). The datum is consistent with the World Geodetic System 1984 (WGS 84). Geographic positions on the chart are based on the datum of 1929. Geographic positions on the chart northward and 1.44' eastward to agree with the datum.

**CAUTION**  
 BASQUE BRIDGE CLEARANCES  
 The clearance of the basque bridges, whose spans do not cross the water, is not shown on this chart. Mariners should consult the U.S. Coast Guard Light List for the clearance of these bridges.

**CAUTION**  
 Temporary changes or defects in aids to navigation are not indicated on this chart. See the U.S. Coast Guard Light List for the current status of aids to navigation.

**CAUTION**  
 SUPPLEMENTAL INFORMATION  
 Consult U.S. Coast Guard Light List for supplemental information.

Magnetic grids  
 Variation 14°W

# Salem Sound



70°50'W

70°48'W

70°46'W

70°44'W